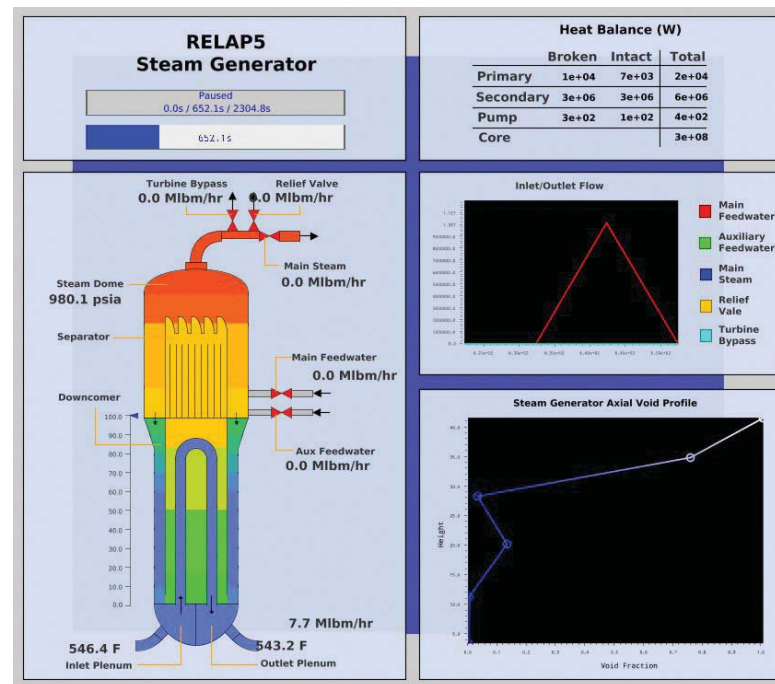


Company Profile: Zachry Nuclear, Inc.

For more than three decades, Zachry Nuclear, Inc. has provided engineering, design and project management services to the operating U.S. nuclear fleet, with extensive PWR and BWR experience at the majority of the U.S. Commercial Fleet. The technical knowledge, experience and capabilities of the staff assist plant owners in support of a wide variety of operational, regulatory, maintenance, and upgrade needs.

Headquartered in San Antonio, Texas, Zachry Nuclear has offices located throughout the United States in Stonington, CT; Charlotte and Cary, NC; Richland, WA; and Chicago, IL. They offer mechanical, electrical, controls and civil/structural engineering professionals and designers who are knowledgeable and experienced in power plant systems; engineering analysis and modification package development; and startup of power plant systems and components. Zachry Nuclear is a qualified nuclear QA supplier; all services are performed in accordance with their Nuclear Quality Program, which complies with 10CFR50 Appendix B and ASME NQA-1 (1994), and has been successfully audited by NUPIC.

Zachry Nuclear's full range of engineering and design services are backed by years of nuclear power plant system experience and practical application of time-tested solutions. Their engineers, designers, project managers and system analysts have an impressive combination of training and experience. When you have a design need, Zachry assembles a fit-for-purpose team for the job, taking into account employees' specialties, education,



skills and expertise. Zachry utilizes industry-recognized design tools and processes, including an in-house Failure Modes and Effects Analysis (FMEA) procedure that fully evaluates proposed system modifications to ensure they will operate effectively and without error. The Numerical Applications Division (formally NAI) has consistently provided the industry with state-of-the-art modeling techniques and approaches for containment response and area heat-up during both design and beyond design basis events. This division of Zachry Nuclear provides a wide spectrum of engineering analysis services including thermal hydraulic, radiological, chemical, core physics and safety analysis, and is the leading developer of nuclear software including Proto-FLO™, Proto-HX™, Proto-HVAC™, Proto-Sprinkler™, CentralStor™, RADTRAD-NAI™ and GOTHIC™* computer code and applications. GOTHIC™, as applied by Numerical Applications, has become the industry standard for containment

modeling and analysis, and has been extensively utilized in operating and new plant licensing activities. Their team also has considerable experience using industry-standard software tools such as RELAP and RETRAN.

The Zachry team delivers high-quality design with the utmost care and strict adherence to safety and regulatory requirements. With a focus on cost-effective operations, Zachry engineers investigate plant performance problems; assess compliance to code and regulatory requirements; perform feasibility studies; develop conceptual designs; evaluate the cost and effectiveness of plant upgrades; and prepare detailed plant design changes including specifications and drawings for plant construction and modifications.

* This product incorporates technology developed for the Electric Power Industry under the sponsorship of EPRI, the Electric Power Research Institute.